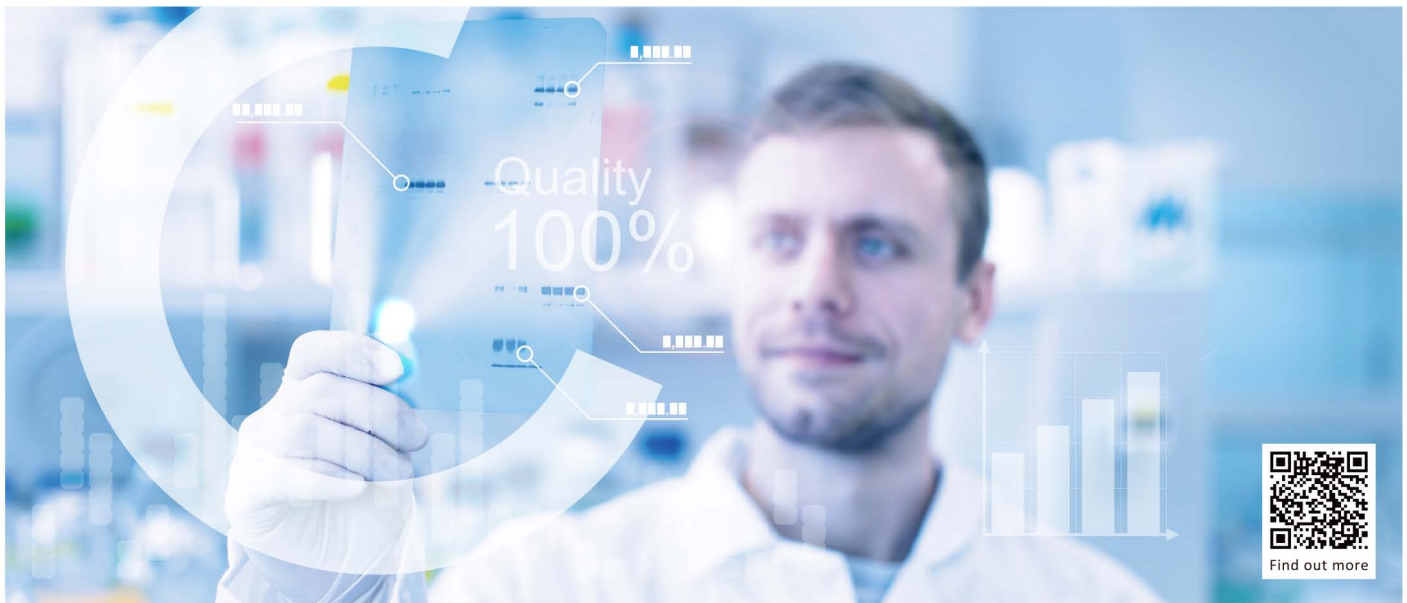


Loading Controls



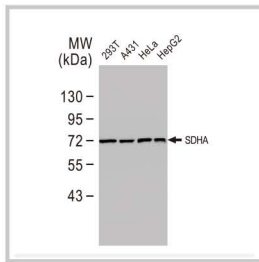
Loading controls are used to ensure that equal amounts of each protein sample are loaded into the wells of an SDS-PAGE gel. Selecting a proper loading control whose signal remains constant under the tested conditions is essential in order to properly interpret the results of the western blot experiment.

Why Choose GeneTex Loading Controls?

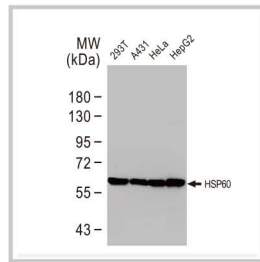
- ✓ VALIDATION IN MULTIPLE SPECIES
- ✓ WELL-CITED IN PUBLICATIONS
- ✓ SUITABLE FOR VARIOUS APPLICATIONS
- ✓ PRODUCTS FOR EVERY MW RANGE

MW (kDa)	Whole Cell	Nucleus	Cytoskeleton	Mitochondria	Serum
124			Vinculin		
77					Transferrin
73				SDHA	
66		Lamin B1		HSP60	
60					
55			alpha Tubulin		
50			beta Tubulin		
42			beta Actin		
38		TBP			
36	GAPDH				
29		PCNA			
20			Cofilin	COX 4	
18	Cyclophilin A				
15		Histone H3			
12				Cytochrome C	

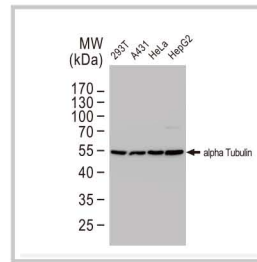
Selected Products



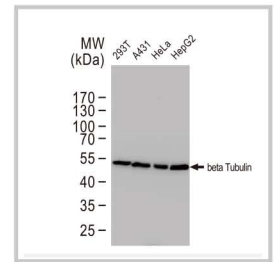
SDHA antibody [GT20710]
(GTX632636)



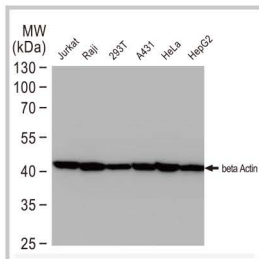
HSP60 antibody (GTX110089)



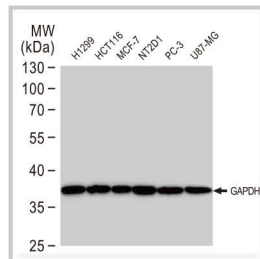
alpha Tubulin antibody
[GT114] (GTX628802)



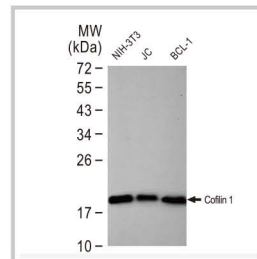
beta Tubulin antibody
(GTX101279)



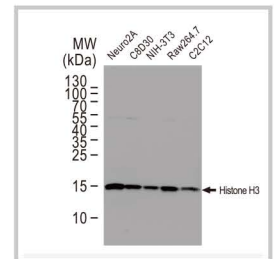
beta Actin antibody [GT5512]
(GTX629630)



GAPDH antibody [GT239]
(GTX627408)



Cofilin 1 antibody [GT567]
(GTX628804)



Histone H3 antibody
(GTX122148)

MW

large

small

Cat. No.	Product Name	Host & Clonality	Reactivity	Application
GTX109749	Vinculin antibody [N3C1], Internal	Rb pAb	Hu, Ms, Rat	IHC-P, WB
GTX112729	Transferrin antibody [N3C2], Internal	Rb pAb	Hu, Rat	ICC/IF, IHC-P, WB
GTX101689	SDHA antibody	Rb pAb	Hu, Ms	ICC/IF, IHC-P, WB
GTX632636	SDHA antibody [GT20710]	Ms mAb	Hu, Rat	ICC/IF, IHC-P, WB
GTX103292	Lamin B1 antibody	Rb pAb	Hu	IHC-P, IP, WB
GTX110089	HSP60 antibody	Rb pAb	Hu, Ms, Rat, Hm	ELISA, ICC/IF, IHC-P, WB
GTX112141	alpha Tubulin 4a antibody	Rb pAb	Hu, Ms, Chk, Dm, Rat	ICC/IF, IHC-P, WB
GTX628802	alpha Tubulin antibody [GT114]	Ms mAb	Hu, Ms, Dm, Rat, Zfsh	ICC/IF, IHC-Fr, IHC-P, WB
GTX101279	beta Tubulin antibody	Rb pAb	Hu, Ms, Rat, Hm	ICC/IF, IHC-P, WB
GTX109639	beta Actin antibody	Rb pAb	Hu, Ms, Dm, Rat, Yeast, Cat, plnt, Rice, C. albicans	ICC/IF, IHC-P, IP, WB, IB
GTX629630	beta Actin antibody [GT5512]	Ms mAb	Hu, Ms, Dm, Rat, Zfsh, Yeast, Goat, Rb	ICC/IF, IHC-P, WB
GTX634166	TFIID antibody [GT453]	Ms mAb	Hu	WB
GTX100118	GAPDH antibody	Rb pAb	Hu, Ms, Dog, Dm, Mk, Pig, Rat, Zfsh, E. coli, Bov	ICC/IF, IHC-P, IP, WB, IHC-R, IB
GTX627408	GAPDH antibody [GT239]	Ms mAb	Hu, Ms, Dm, Mk, Rat, Zfsh, Yeast, E. coli, Hm	ICC/IF, IHC-P, WB
GTX100539	PCNA antibody	Rb pAb	Hu, Ms, Rat	ICC/IF, IHC, IHC-P, IP, WB
GTX102156	Cofilin 1 antibody	Rb pAb	Hu, Ms, Rat	ICC/IF, IHC-P, WB
GTX628804	Cofilin 1 antibody [GT567]	Ms mAb	Hu, Ms	ICC/IF, IHC-P, WB
GTX114330	COX4 antibody	Rb pAb	Hu, Ms, Rat	ICC/IF, IHC-P, WB
GTX628886	COX4 antibody [GT6310]	Ms mAb	Hu, Rat	ICC/IF, IHC-P, WB
GTX104698	Cyclophilin A antibody [C1C3]	Rb pAb	Hu	ICC/IF, IHC-P, WB
GTX122148	Histone H3 antibody	Rb pAb	Hu, Ms, Dm, Mk, Rat, Rice	ICC/IF, IHC-P, IP, WB, ChIP assay
GTX108585	Cytochrome C antibody	Rb pAb	Hu, Ms, Rat	IHC-Fr, IHC-P, WB
GTX633691	Cytochrome C antibody [GT577]	Ms mAb	Hu, Ms, Rat	IHC-P, WB

